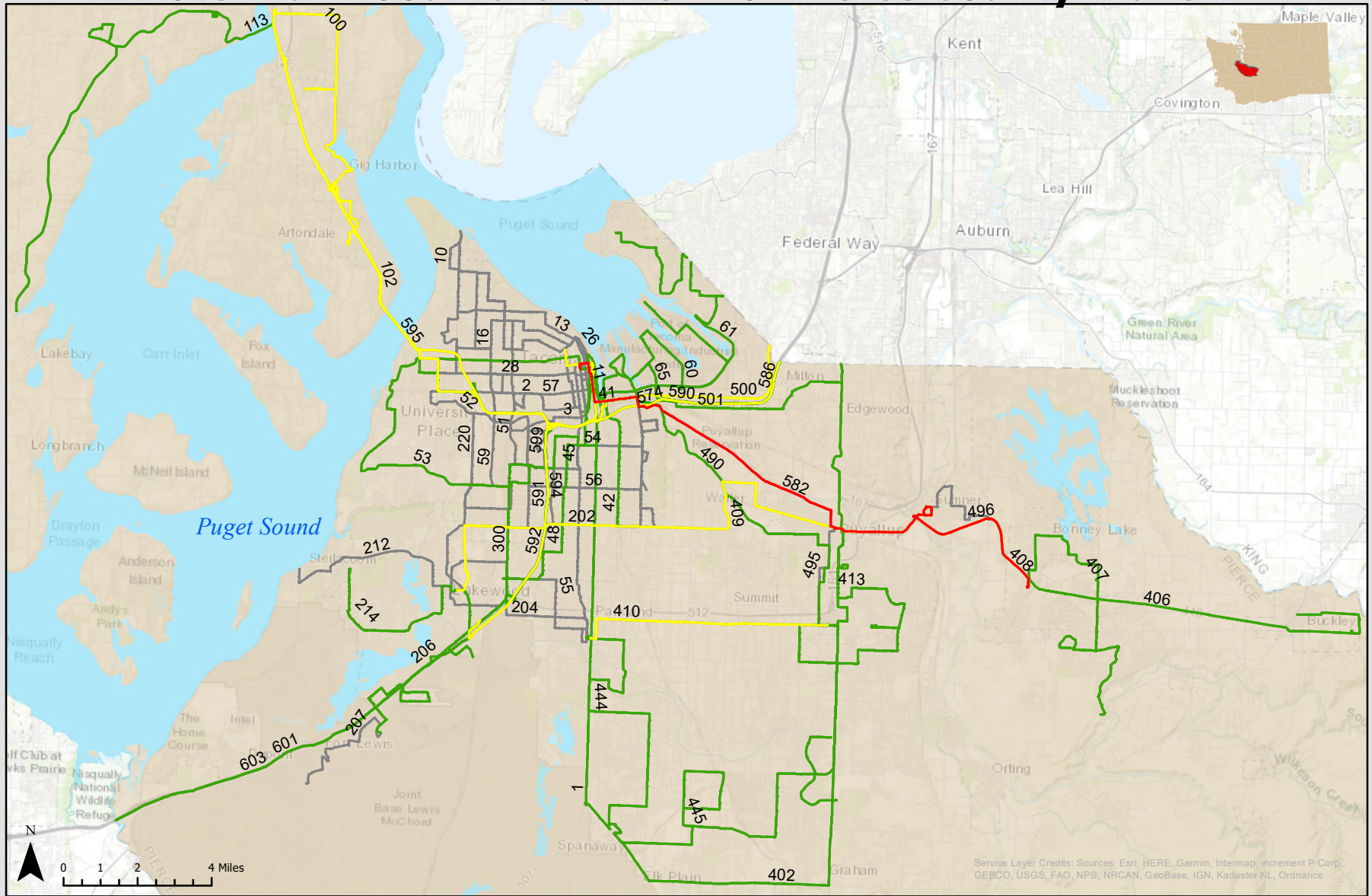


Potential Flood Hazard Risk For Pierce County Transit



- High Hazard Route
- Medium Hazard Route
- Low Hazard Route
- Unaffected Routes

Many residents of Pierce County use public transport for their day to day activities. However, some of these sections of these transit routes are at risk for flooding in a heavy rain event. All highlighted routes have potential to be compromised at at least one point. They are ranked by percent of the route that would be compromised in a flood.

Resources/References
Analyst: Ainsley McCullough, ainsleyk@uw.edu
Data Source: UWT Urban Studies, Pierce County Open Portal, Pierce County Transit Authority
Created: 1/31/2018
Software: ArcMap 10.6.1
Projected Coordinate System: NAD 1983 HARN StatePlane Washington South FIPS 4602 Feet